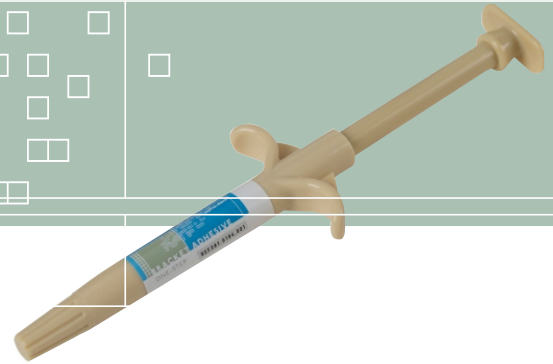
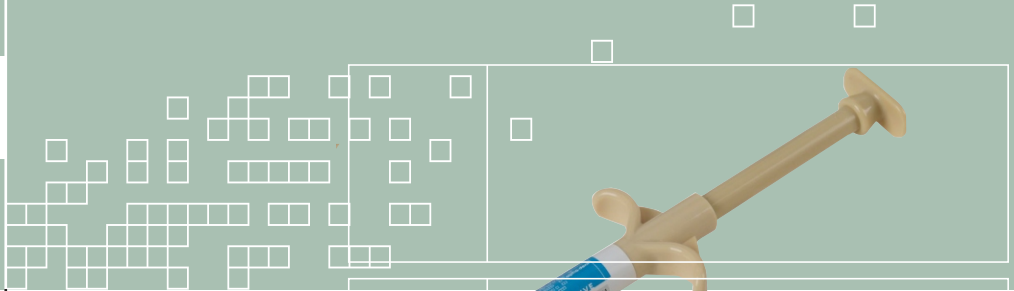




# ALPHA-DENT® ONE-STEP BRACKET ADHESIVE

ALPHA DENT® ONE-STEP  
BRACKET ADHESIVE PROVIDES

- - ↓
  - 
  - 
  - 
  - 
  - 
  - 
  -
- BONDS TO METAL ■
  - BONDS TO CERAMIC ■
  - BONDS TO PLASTIC ■
  - IDEAL BOND ■
  - TACKY VISCOSITY ■



## ONE-STEP BRACKET ADHESIVE

**Alpha-Dent® One-Step Bracket Adhesive** is a Paste-Primer system formulated to bond to metal, ceramic and plastic brackets. The unique filler and primer combination used produces an ideal bond and a smooth tacky viscosity minimizing bracket flotation.

### Physical/ Mechanical Properties

Working Time	60 sec. at 23 °C
Setting Time	75 sec. at 37 °C
Bond Strength, Bracket - Enamel	12.5 MPa

### DENTAL TECHNOLOGIES, INC.

6901 N. HAMLIN AVENUE  
LINCOLNWOOD, ILLINOIS 60712 USA

1.800.835.0885 TOLL FREE [US/CANADA]  
1.847.677.5500 PHONE  
1.847.677.5502 FAX

### ALPHA-DENT® ONE-STEP BRACKET ADHESIVE

REF CODE	PRODUCT DESCRIPTION
209.0101.001	Alpha-Dent® One-Step 12mL Primer
301.0101.001	Alpha-Dent® 14g One-Step Adhesive Jar
301.0102.001	Alpha-Dent® 14g One-Step Adhesive (40x.35g) Unit Dose
301.0104.001	Alpha-Dent® 3.5g One-Step Adhesive Syringe
301.0000.001	14g Adhesive 12mL Primer, 7mL Etch Liquid, Brushes, Spatulas, Mixing Pad
301.0001.001	14g Adhesive (40 x .35g Unit Dose), 12mL Primer, 7mL Etch Liquid, Brushes, Spatulas, Mixing Pads
301.0008.001	1 x 3.5g Adhesive, 5mL Primer, 3mL Etch Liquid, Brushes, Spatulas, Mixing Pads
301.0003.001	4 x 3.5g Adhesive, 12mL Primer, 7mL Etch Liquid, Brushes, Spatulas, Mixing Pads