

Ultra-thin Flexible Image Plate Comfortable Experience

4 sizes of image plates available
Meet different clinical needs

Thickness 0.1mm
Soft, thin and flexible

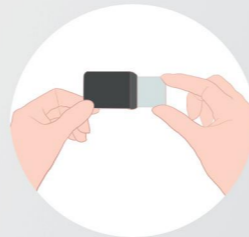
Reusable, cost saving
Environmental Protection



STEPS



① Put the image plate in the patient's mouth shot by a dental X-ray machine



② Take the image plate out of the protective bag



③ Insert the image plate into the EQ-600



④ Use software to read data and generate images

COMPONENTS AND PACK

- ① Box ② EQ-600 Main Unit ③ Image Plate(2#) 1pc/box
- ④ USB Flash Drive(Software inside) ⑤ Protective Bag(2#) 200pcs/box
- ⑥ Power Line ⑦ Power Adapter ⑧ USB Cable



Guilin Veirun Medical Technology Co., Ltd.

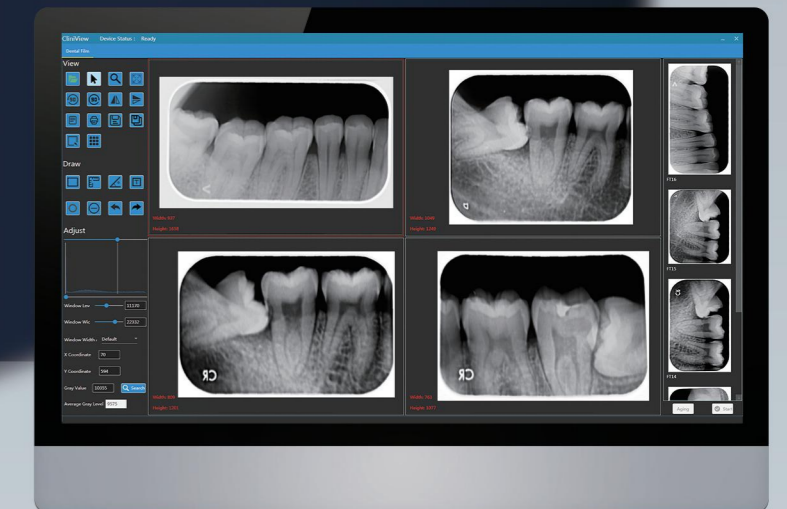
Add: D-07 Information Industrial Park, National High-Tech Zone,
Guilin Guangxi, P.R.China
Postcode: 541004
Tel.: +86-773-2260519
Email: info@veirun.com
www.veirun.com



Ultimate Scanner for Dental Imaging

EQ-600

Image Plate Scanner

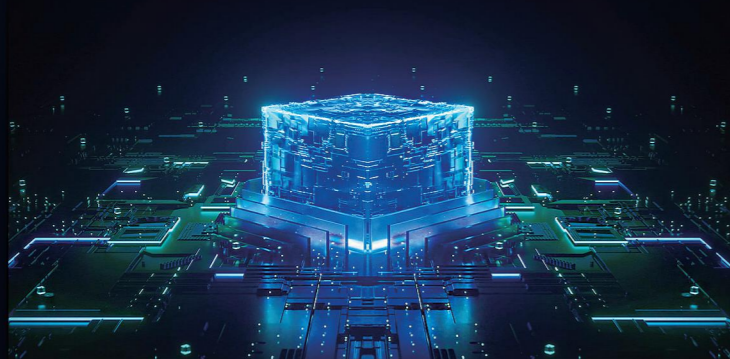


Guilin Veirun Medical Technology Co., Ltd.



Algorithm fast and accurate

EQ-600 adopts new high performance FPGA chip. This realizes the high speed embedded communication system board based on FPGA. Data is interconnected and shared through Gigabit Ethernet, and image processing is faster and more accurate.

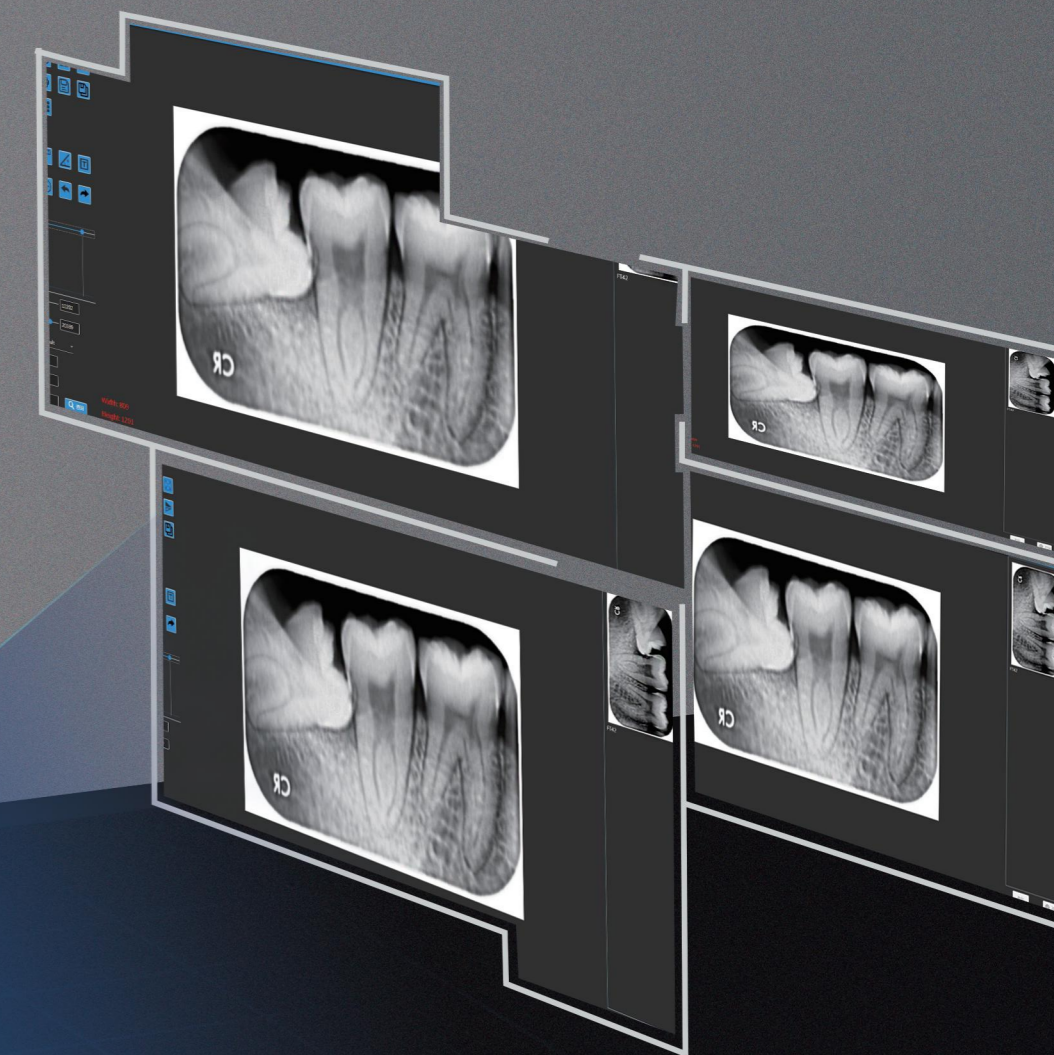
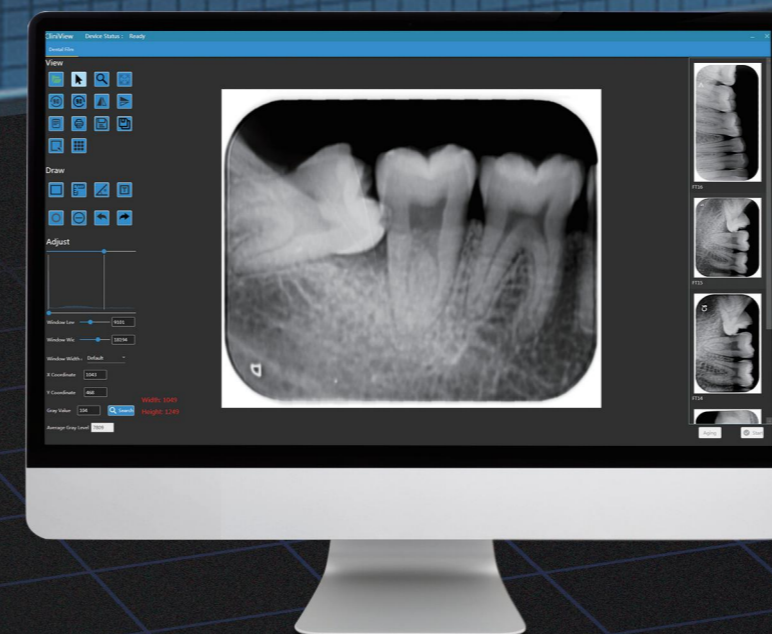


High-speed FPGA Chip

FPGA chips can operate in parallel, like embedding multiple CPUs on a chip. It can perform 10 or 100 times more than a single CPU for faster, smoother, clearer image imaging.

Clear image, tiny details

Up to 65536 grade, 16Bit image gray value film level of grayscale performance. Everywhere is hidden in endless details, making the image expressive.



Smart Image Data Sharing

Supports sharing images on the computer side of multiple clinics. To provide dentists with more convenient diagnostic basis.