

SPECIFICATIONS

PRODUCT

Scan Field: 18x16mm²

Scan Depth: 20mm

Accuracy: 10μm

Handpiece Dimension: 216 x 40 x 36 mm

Handpiece Weight: 228g

Tip Types: 3 (Autoclavable)

Scanning Control: Button

Image Transfer Interface: USB 3.0

Cable Length (m): 2m



SOFTWARE

Types of Scanning: Orthodontics, Implant, Restoration

Output File: STL, PLY, PTY

Function: Margin Line Drawing, Occlusal Match, Undercut, Data Comparison, etc.

AI Technology: Auto Tissue Remove, Overlap Correct, etc.

PC REQUIREMENTS

CPU: Intel i7-8700 (3.2GHz) and above

RAM: DDR2400 16G and above

Hard disk: Solid state drive 120G and above

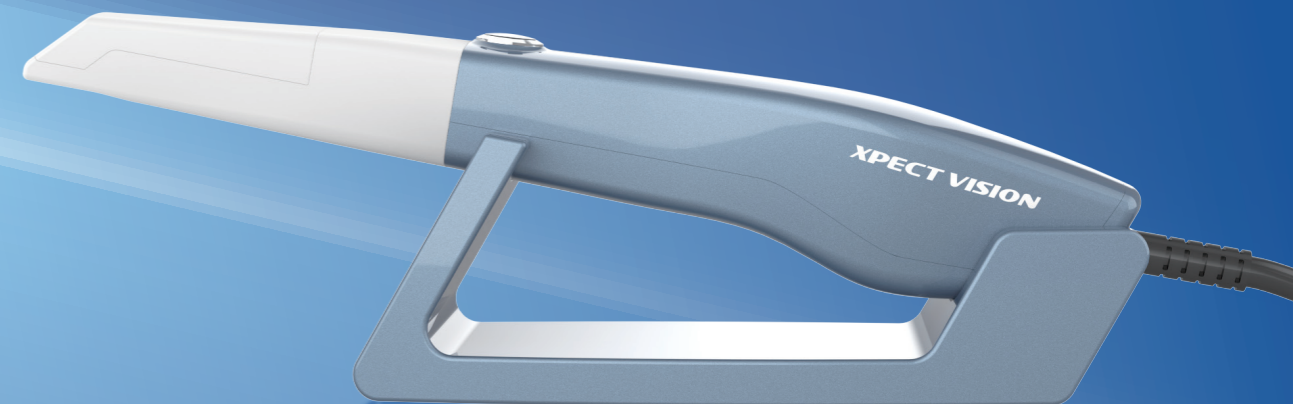
Graphics card: NVIDIA GTX1060 (6G) and above

Computer operating System: Windows10*64 bit

Display: Resolution 1920×1080 and above

QScan7000

Intraoral Scanner



EASIER SCANNING

Smart Scan Guide

Real-time user guidance assists in adjustment when anomalies are detected during scanning.

Motion Sensing

The scanner's motion-sensing function enables clinicians to conduct sterile scanning.

Smart Scan Filtering

Enhanced A.I. filtering capabilities facilitate scanning by eliminating soft tissue such as lips, cheeks, and tongue.

Smooth Scanning

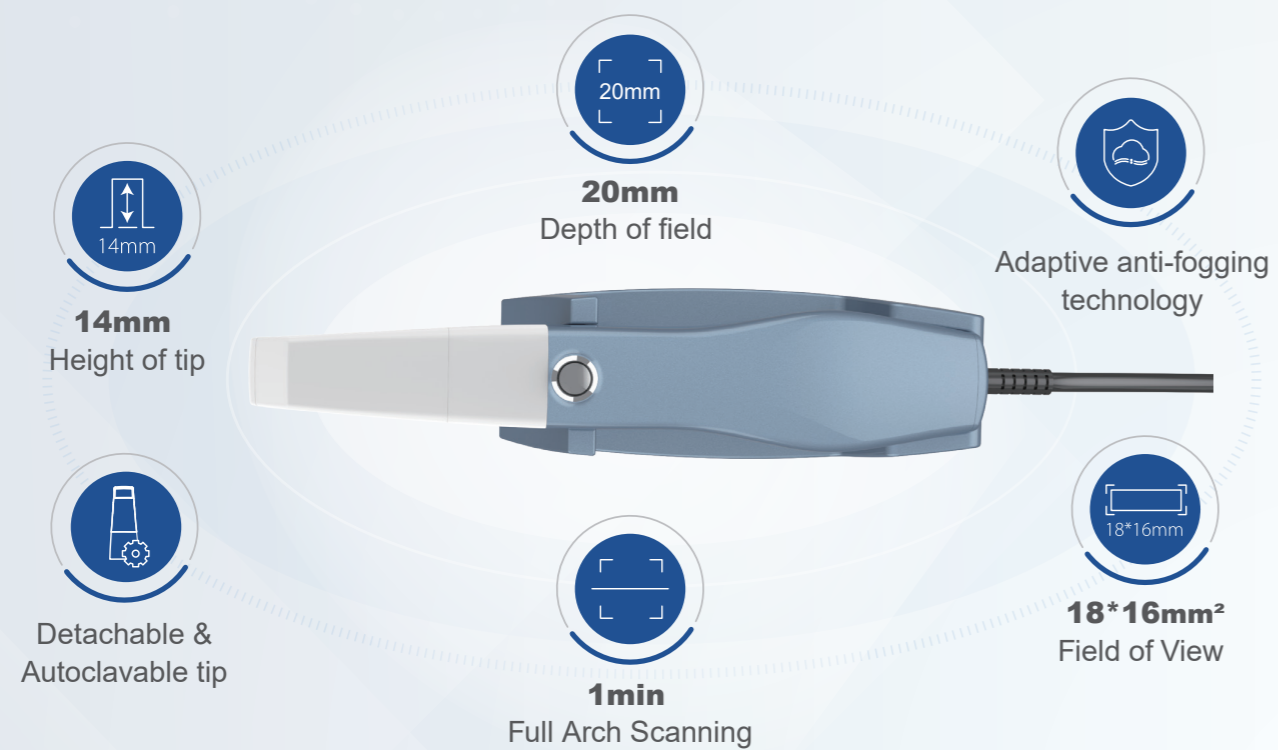
Few disruptions during scanning.

 **Xpectvision Technology Co., Ltd.**

 www.xpectvision.com

 B507, Nanshan Medical Device Industrial Park, Nanshan District, Shenzhen City

 marketing@xpectvision.com



REALISTIC COLOR

Real-time scan, realistic color, and a clear margin line.



SOFTWARE



Clear and easy Margin Line drawing



Pre-op Scan available for Implant Restoration



Comparison of two sets of data, such as denture and full arch

TREATMENT TYPES

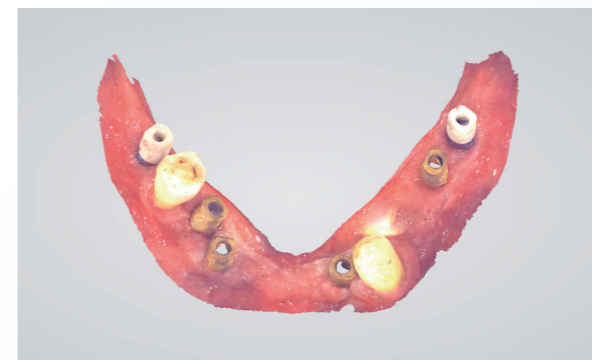
Restoration

Shoulder margins that are accurately and distinctively contribute to efficient design, and high-definition color photos aid dentists in distinguishing between gingiva and teeth. One visit, instantaneous restoration.



Implant

Fast scanning with a broad field of view takes 3mm data of the cuff easily and scans metal route pins precisely. There is no need to make duplicate impressions to enhance the patient treatment experience.



Orthodontics

High precision of the entire dentition, restoring the natural state of the whole arch. Receive orthodontic care quickly and save time for additional patients.

