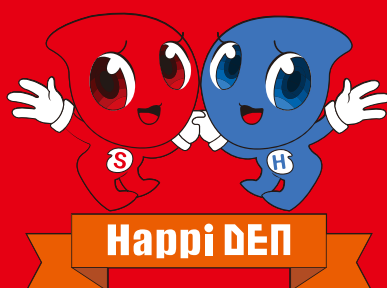


2023 Product Catalog



HYDROPHILIC VINYL POLYSILOXANE
IMPRESSION MATERIAL

Impression Delikit VPS Series



Delikit Heavy Body (50ml)
REGULAR SET / FAST SET

REGULAR SET (Product Code. DHB-1)	FAST SET (Product Code. DHB-2)
W.T 01' 15"	W.T 00' 40"
S.T 03' 30"	S.T 02' 00"
Shore Hardness. 67	Shore Hardness. 68



Delikit Medium Body (50ml)
REGULAR SET

(Product Code. DMB-1)
W.T 01' 15"
S.T 03' 30"
Shore Hardness. 57



Delikit Light Body (50ml)
REGULAR SET / FAST SET

REGULAR SET (Product Code. DLB-1)	FAST SET (Product Code. DLB-2)
W.T 01' 15"	W.T 00' 40"
S.T 03' 30"	S.T 02' 00"
Shore Hardness. 52	Shore Hardness. 53



Delikit Extra Light Body (50ml)
REGULAR SET / FAST SET

REGULAR SET (Product Code. DELB-1)	FAST SET (Product Code. DELB-2)
W.T 01' 15"	W.T 00' 40"
S.T 03' 30"	S.T 02' 00"
Shore Hardness. 50	Shore Hardness. 51



Deli Bite Registration (50ml)

(Product Code. DBR-1)
W.T 00' 20"
S.T 00' 50"
Shore Hardness. 95



**Delikit Clear
Bite Registration (50ml)**

(Product Code. DCBR-1)
W.T 00' 30"
S.T 01' 10"
Shore Hardness. 58



Delikit Putty Eco (500ml)
REGULAR SET

(Product Code. DPE-1)
W.T 01' 15"
S.T 03' 30"
Shore Hardness. 70



Delikit Putty Eco (500ml)
FAST SET

(Product Code. DPE-2)
W.T 00' 40"
S.T 02' 00"
Shore Hardness. 70



Delikit Jumbo (360ml)

(Product Code. DJ-1)
W.T 01' 15"
S.T 03' 30"
Shore Hardness. 63

Impression Delikit VPS Series



*Putty 1ea + LB 2ea + Mixing tip 10ea



*Putty 1ea + LB Fast Set 2ea + Mixing tip 10ea

Delikit Putty Eco+ REGULAR SET

(Product Code. DPEK-1)

W.T 01' 30"

S.T 03' 30"

Shore Hardness. 70

Delikit Putty Eco+ FAST SET

(Product Code. DPEK-2)

W.T 01' 20"

S.T 02' 00"

Shore Hardness. 70

Delikit VPS Trial kit



*Heavy Body 1ea+3.0 LB 1ea+Heavy Body Mixing Tip 3ea
+3.0 LB Mixing Tip 3ea+Plunger

Delikit 3.0 Trial Kit Heavy Body REGULAR SET

(Product Code. DTKHB-1)

W.T 01' 15"

S.T 03' 30"



*Heavy Body 1ea+3.0 LB 1ea+Heavy Body Mixing Tip 3ea
+3.0 LB Mixing Tip 3ea+Plunger

Delikit 3.0 Trial Kit Heavy Body FAST SET

(Product Code. DTKHB-2)

W.T 00' 40"

S.T 02' 00"

Impression Delikit VPS Trial kit



*Putty 40ml 1set+3.0 LB 1ea+Putty Spoon 1set
+3.0 LB Mixing Tip 3ea+Plunger

Delikit 3.0 Trial Kit Putty REGULAR SET

(Product Code. DTKP-1)

W.T 01' 15"

S.T 03' 30"



*Putty 40ml 1set+3.0 LB 1ea+Putty Spoon 1set
+3.0 LB Mixing Tip 3ea+Plunger

Delikit 3.0 Trial Kit Putty FAST SET

(Product Code. DTKP-2)

W.T 00' 40"

S.T 02' 00"

How to Take An Impression

Case 1. Single Crown case

Materials : Delikit Light Body Fast + Delikit Heavy Body Fast



Prepare light body fast and heavy body fast



Dispense heavy body fast upto wall height
in a tray to horizontal-zigzag direction



Apply light body fast to prepared crown



Seat a tray



Close the mouth and 2 min. setting



Final impression

How to Take An Impression

Case 2. Inlay & Crown case

Materials : Delikit Light Body Fast set + Delikit Heavy Body Fast set



Prepare light body and heavy body with dispensers and a tray



Dispense heavy body upto wall height in a tray to horizontal-zigzag direction



Dispense light body into inside of sulcus with moving to cusp.
* Cautious not to contain air-bubbles



Seat a tray



Close the mouth and waiting for 3 min. setting



Final impression

Case 3. Multi Crown case

Materials : Delikit Light Body + Delikit Putty Eco



Prepare premium light body and macro putty with dispenser and tray



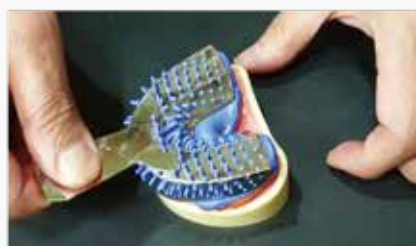
Get same 1:1 q'ty with each color of spoons, and mix it into perfect one color



Fill mixed putty upto wall height of a tray, mixing time 30", working time 1'00"



Dispense light body on teeth with immersed tips to avoid voids



Close the mouth and 4 min. setting



Finished impression

Impression Implant VPS



Implant Heavy Body (50ml)

Implant Monophase (50ml)

Implant Light Body (50ml)

(Product Code. IHB-1)

W.T 01' 20"

S.T 02' 30"

Shore Hardness. 72

(Product Code. IMB-1)

W.T 01' 20"

S.T 02' 30"

Shore Hardness. 60

(Product Code. IML-1)

W.T 00' 50"

S.T 02' 30"

Shore Hardness. 55

How to Take An Impression

Case. Multiple case

Materials : Implant Light Body + Implant Heavy Body



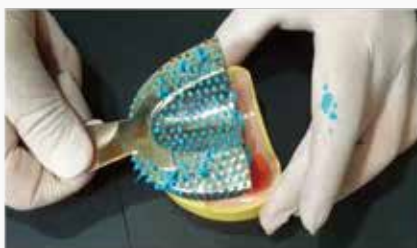
Prepare light body and heavy body with dispensers and a tray



Dispense heavy body upto wall height in a tray to horizontal-zigzag direction



Apply light body to prepared tooth and implants



Seat a tray



Close the mouth and waiting for 4 min. setting

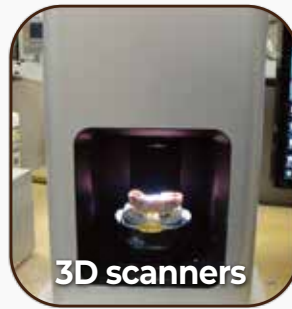


Final impression

3D Scannable



Titanium model



3D scanners

Dimensional Stability Testing of VPS Impression Material

Test Procedures



Heavy body (Regular) impression material was poured on the titanium full arch model base for testing



Light body (Fast) impression material was poured on a model for testing



The model was placed on the heavy body impression for the double-mix technique



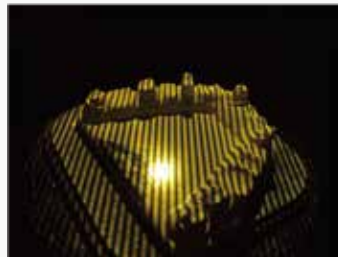
A clear and crisp margin line was reproduced after careful removal of the model from the impression



The impression was scanned using the Origin Intelligence, a 3D dental scanner, 30 minutes after the impression was taken



The same impression was scanned again 1 week after the impression was taken. (Different light exposure makes the impression color look different)



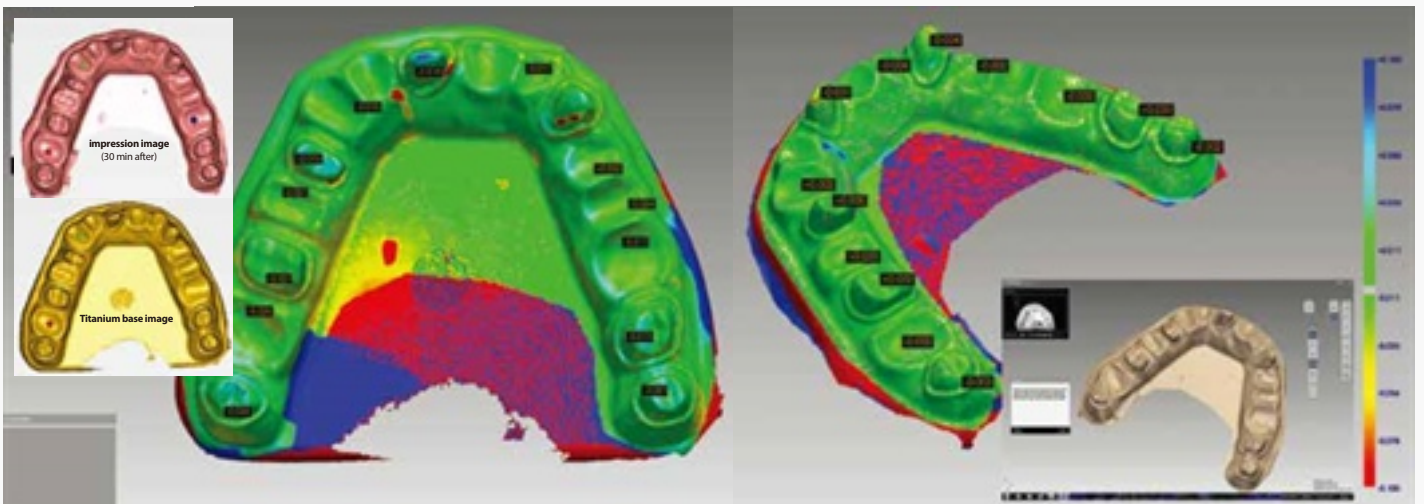
The titanium model was also scanned as a control



3D scanned image of the impression

The impression & prepped model overlay

The impression image taken 30 min after setting is overlapped with an image of the same impression taken 1 week after setting



Overall, the shrinkage of the impression material after 30 minutes is very minimal, ranging from 10-30 microns (0.01 - 0.03mm). The above image shows that there was substantially no shrinkage in the impression material after 30 minutes of setting (as indicated by the image showing nearly all green in the tomographic view). This result is as good or better than leading competitors.

Impression Denture VPS



**Denture
Soft Reliner (50ml)**

**Denture
Primer (10ml)**

**Denture
Border (50ml)**

**Denture
VPS (50ml)**

(Product Code. DSR-1)

(Product Code. SPRP-1)

(Product Code. DB-1)

(Product Code. DVPS-1)

W.T 02' 30"

W.T 01' 00"

W.T 01' 00"

S.T 03' 00"

S.T 02' 00"

S.T 02' 30"

Shore Hardness. 39

Shore Hardness. 80

Shore Hardness. 60

SP Reline S



*Denture Soft Reliner 1ea + Tip 6ea + Primer 1ea + Brush 6ea
+ Finishing Wheel 1ea + Coarse Point 1ea

Denture Soft Reliner

(Product Code. SPRS-1)

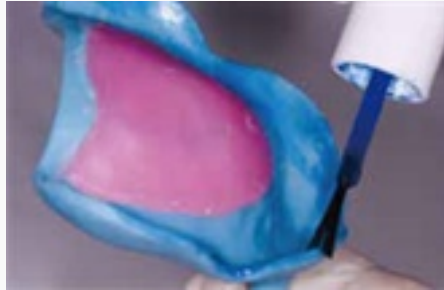
W.T 02' 30"

S.T 03' 00"

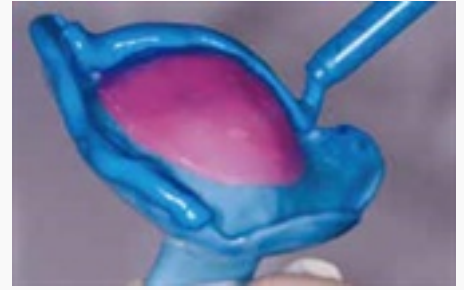
How to use Delikit-Denture



Martin formation (maxilla)



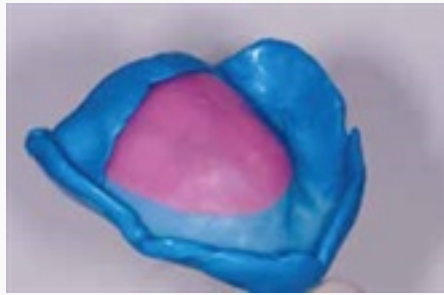
Apply adhesive



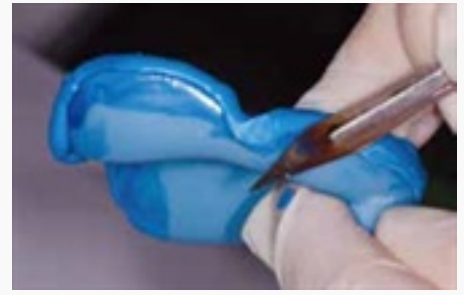
Apply Delikit-border



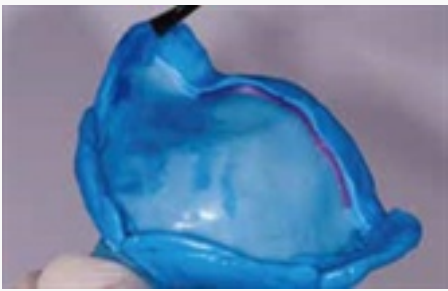
Maxillary marginal formation



Finished marginal margins



Marginal trimming



Apply adhesive



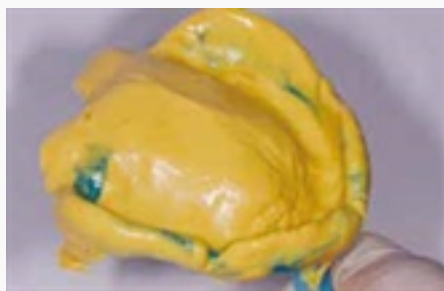
Apply Delikit-Denture



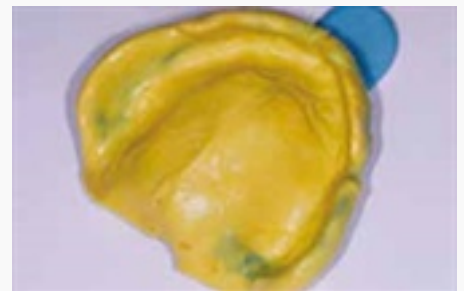
Spreading



Seating in a mouth



Removal



After trimming, Final impression

Impression Specialties



**Delikit 3.0
Light Body (4.5ml)**
REGULAR SET

(Product Code. DLB3.0-1)
W.T 01' 15"
S.T 03' 30"
Shore Hardness. 52



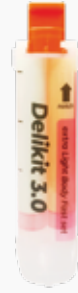
**Delikit 3.0
Light Body (4.5ml)**
FAST SET

(Product Code. DLB3.0-2)
W.T 00' 40"
S.T 02' 00"
Shore Hardness. 53



**Delikit 3.0
Extra Light Body (4.5ml)**
REGULAR SET

(Product Code. DELB3.0-1)
W.T 01' 15"
S.T 03' 30"
Shore Hardness. 47



**Delikit 3.0
Extra Light Body (4.5ml)**
FAST SET

(Product Code. DELB3.0-2)
W.T 00' 40"
S.T 02' 00"
Shore Hardness. 47



**Delikit 7.0
Light Body (9.7ml)**
REGULAR SET

(Product Code. DLB7.0-1)
W.T 01' 15"
S.T 03' 30"
Shore Hardness. 52



**Delikit 7.0
Light Body (9.7ml)**
FAST SET

(Product Code. DLB7.0-2)
W.T 00' 40"
S.T 02' 00"
Shore Hardness. 53



**Delikit 7.0
Extra Light Body (9.7ml)**
REGULAR SET

(Product Code. DELB7.0-1)
W.T 01' 15"
S.T 03' 30"
Shore Hardness. 47



**Delikit 7.0
Extra Light Body (9.7ml)**
FAST SET

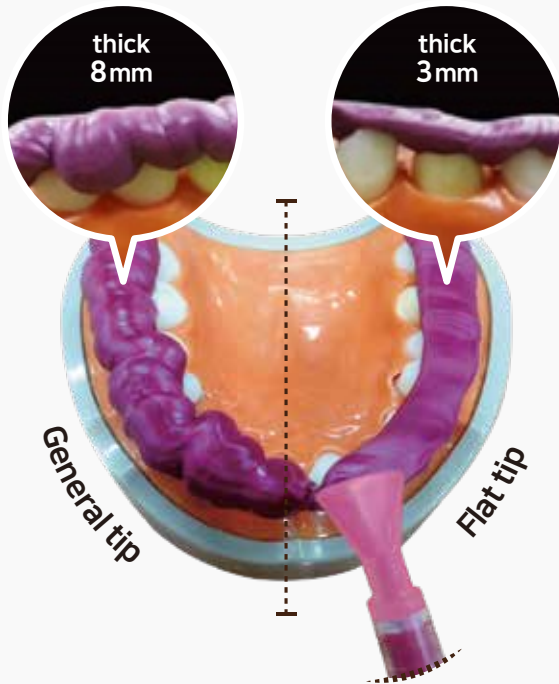
(Product Code. DELB7.0-2)
W.T 00' 40"
S.T 02' 00"
Shore Hardness. 47



Gingival Mask (50ml)

(Product Code. GM-1)
W.T 02' 00"
S.T 03' 30"
Shore Hardness. 50

Flat Tip



Patented

Flat tip

1. Easy and quick regular spreading
2. **50%** save
3. No Trimming

30-2018-0003331 patent reg.



CERTIFICATE OF PATENT



CERTIFICATE OF DESIGN REGISTRATION



Item No. Tip-001

50% consumption



General Tip

Low exactness of bite registration
Massively dispensed q'ty distorts a thin layer on buccal and lingual part.

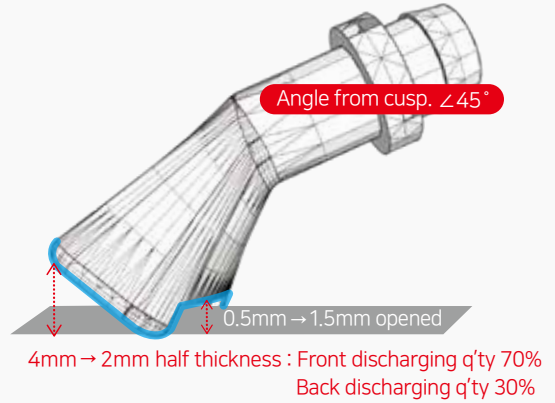
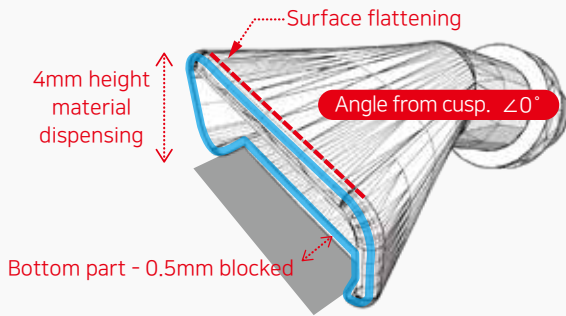


Flat tip

Exact bite registered with the right q'ty
(50% consumption)

Flat Tip

Flat tip discharging theory



How to Use

1. Preparation : Install the mixing tip connected with flat tip to dispensing gun, and squeeze dental impression material into mixing tips, until it is being filled just before flat tip.
2. Start dispensing directly on tooth (please do not lift up "Flat tip" from surface of tooth)
3. Complete within 3~4 seconds for one side



① Fill mixing tip
(Just before to "Flat tip")

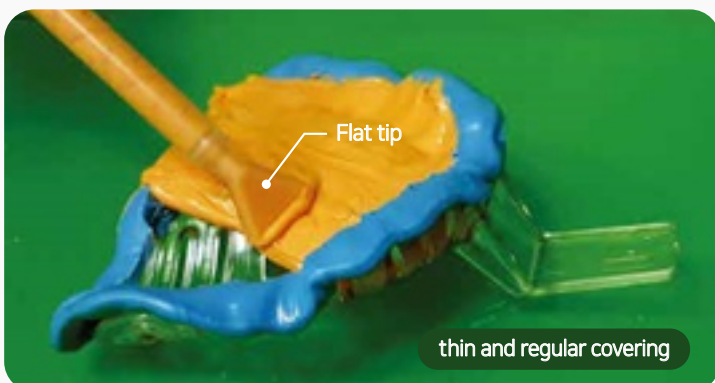


② START!! Closely applying



③ Complete within 3~4 sec.
for one side

Other usage : Flat tip Denture impression





Oct. 2007.

Certified KGMP by KFDA, KOREA



Aug. 2010.

Certified CE by SGS



Nov. 2011.

Certified FDA by U.S FDA



Nov. 2011.

Certified ISO 13485 by Kalitest



Oct. 2012.

Certified QMS-169 by Japan MHLW

CERTIFICATION

Happiden

Tel : +82-70-4290-7336

Fax : +82-51-204-2823

E-mail : overseas1@happidenusa.com, overseas2@happidenusa.com

Adress : Sherpa Korea 438-1, HaSinBeonYeong-ro, Saha-gu, Busan, Korea